

# THE TRANSPORT ADVISOR



## The Year of Compliance

In a year when all things normal seem to be in a flux, the world of compliance can become lost among other world events that dominate our daily attention.

The fact remains that compliance is a crucial element of the international trade landscape and should not be forgotten or escape the attention of those impacted by these regulations, namely the carriers, manufacturers, importers and exporters.

### THE LIST IS LONG

Much has already been written about both ACE and SOLAS, nonetheless they are significant factors to compliance and worth keeping in mind. In addition, here is a list of other regulations to be enacted or come into force this year:

- **Safe Port Act** – July 1 2016. The current target date of 100 percent screening of all containers moving from foreign ports to U.S. ports looks likely to be delayed yet again. This issue was mandated in 2006, but apparently funding was not considered and therefore has been delayed several times.
- **FMC Renewal of OTI Licenses** – December 9, 2016. Commencing at the end of this year, OTI's will be required to renew their licenses every 3 years. ...continued on page 2

### SOLAS FILINGS

Have you filed your SOLAS rules in your tariff?



### RESPONSIVE DESIGN & A NEW LOOK

In the next few months we will be introducing responsive design to the Bote Suite of Products. This will allow our users to access our software on any digital device for it will respond to that screen format accordingly. Providing an ease of use unmatched in the industry, these changes will allow our customers to improve their performance.

We will also be giving our [www.globemar.com](http://www.globemar.com) a facelift and converting it to responsive design. We will provide unveiling dates within the next few months and hope you like what you see.



## SPOT MARKET TRENDS

**Chart 1**, next page, shows the aggregate filings for the first five business days of the last 3 months for 40' any height equipment regardless of trade lane.

These rates are Base Ocean plus all additional charges per each individual tariff.

**Chart 2**, next page, is a comparative of VOCC vs. NVOCC filings in the Europe to North America trades for 2016.

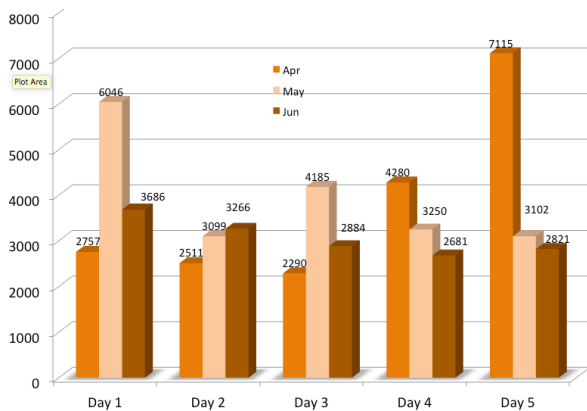
These rates are 40' Any Height and are Base Ocean plus any additional applicable from each individual tariff.

**Chart 3**, next page, is a comparative of VOCC vs. NVOCC filings in the North America to South America trades for 2016.

These rates are 20' Any Height and are Base Ocean plus any additional applicable from each individual tariff.

See charts, page 2.

**We appreciate your feedback. Please let us know if this information is useful to you and your business.**

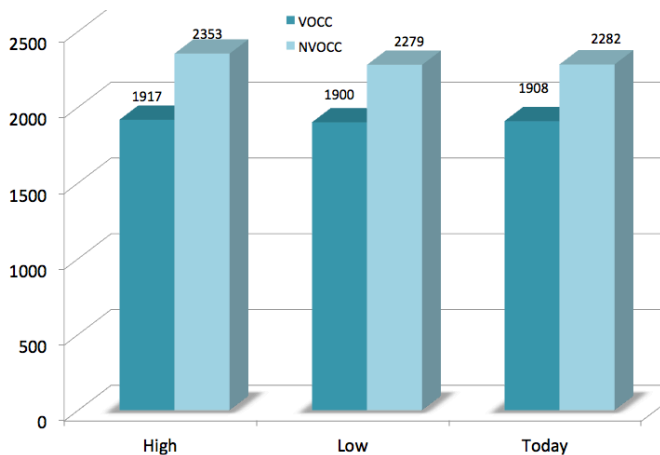
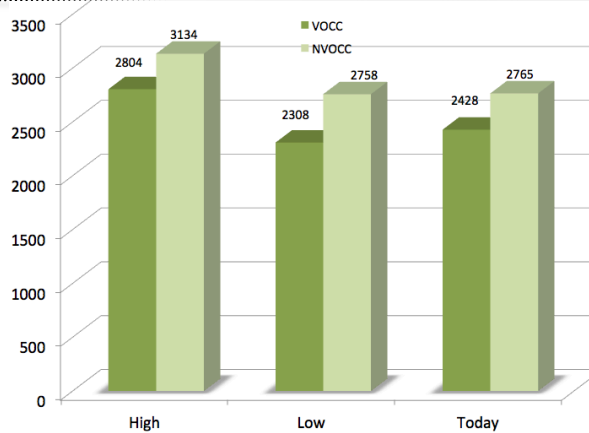


First 5 business days of Last 3 months

40' Any Height Bottom Line including all charges USD

Eur. to NA 40' 2016 USD

NVOCC vs. VOCC



North America to South America 20' Any Height USD

VOCC vs. NVOCC

## Compliance - continued

- EU's Conflict Minerals Law:** This will be the equivalent to the Dodd-Frank Act as it deals with rare minerals coming out of conflict areas around the world, with a special emphasis on the Congo. It is expected to come into play mid year, though no specific date has been set.
- EU Antifraud Agency –** September 1, 2016. OLAF in particular. This provides for the creation of centralized databases containing information on container movements, as well as on the goods entering, leaving and transiting the EU. The amendment is expected to strengthen the analytical capabilities of both OLAF and national customs authorities in detecting fraudulent operations.
- EU Biocidal Products Regulations –** This regulation will require manufacturers to apply and get advanced permission before placing specific chemicals into their products.

Sources – Links to each of the sources will be provided at the bottom of the newsletter email.